

EXPERIENCE THE HISTORY, EXPERIENCE THE ARTS,
EXPERIENCE GOLDEN RAVEN
CULTURAL ATTRACTIONS.



A GOLDEN RAVEN
EXPERIENCE

www.goldenraven.ca



SUPER, NATURAL
BRITISH COLUMBIA®
CANADA

NORTHERN BRITISH COLUMBIA

THE GOLDEN RAVEN *Experience*

**FOR FUN. FOR CULTURE.
FOR HISTORY.**

In north central British Columbia, our cultural experiences are as varied as our natural beauty. Rich in a past that stretches from the era of the dinosaur to the construction days of the Grand Trunk Pacific Railway, we are a region built by hard-working people of diverse nationalities and backgrounds. Our fine lineup of museums and galleries are ready to welcome visitors with the kind of hospitality only found in this part of the world... Let the Golden Raven be your guide as you discover the region's colourful history, environment and culture.



A GOLDEN RAVEN EXPERIENCE

www.goldenraven.ca

WHAT IS THE GOLDEN RAVEN?

The symbol of the Golden Raven was chosen to identify cultural venues within the region of the Regional District of Fraser-Fort George. The symbol's purpose is to assure visitors enjoy a quality experience when visiting any cultural site bearing the Golden Raven designation. The symbolism of the Golden Raven includes the colour gold and the Raven, a year-round native species to the region. Gold, as a colour represents value, implies quality and is a reminder of the gold rush days. The Raven is a survivor, who is an intellectual, playful, crafty, resourceful and displays many human qualities. Ravens are deeply rooted in Aboriginal history and are respected birds.

WHAT MAKES THE GOLDEN RAVEN DISTINCT?

What makes the Golden Raven distinct is that it recognizes the shared historical and cultural roots of north central British Columbia, while celebrating each attraction's unique cultural offerings. Each visitor will leave our region with a clear sense of our pioneer past and cultural present.



A GOLDEN RAVEN EXPERIENCE

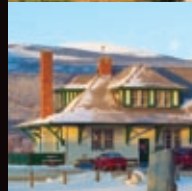
www.goldenraven.ca



Valemount Museum
Valemount, BC
250-566-4177
valemountmuseum.ca



Valley Museum & Archives
McBride, BC
250-569-2503
mcbridemuseum.ca



Whistle Stop Gallery
McBride, BC
250-569-8891
whistlestopgallery.org



The Exploration Place Science Centre & Museum
Prince George, BC
250-562-1612 or 1-866-562-1612
theexplorationplace.com



Two Rivers Gallery
Prince George, BC
250-614-7800
or 1-888-221-1155
tworiversartgallery.com



Railway & Forestry Museum
Prince George, BC
250-563-7351
pgrfm.bc.ca



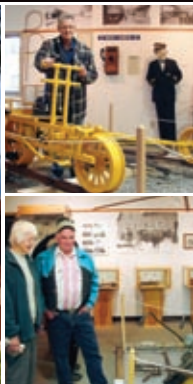
Huble Homestead Historic Site
Prince George, BC
250-564-7033
hublehomestead.ca



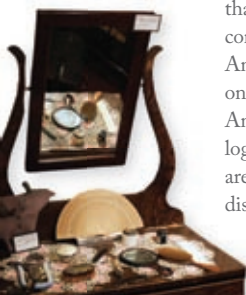
Mackenzie & District Museum
Mackenzie, BC
250-997-3021
mackenziemuseum.ca

Valemount Museum

FROM 1914 UNTIL 1981, Valemount's museum was the town's railway station, one of the busiest places in the bustling railroad town situated between the three mountain ranges and in the shadow of the tallest mountain in the Rockies — Mount Robson. At the Valemount



Museum visitors learn about the people and events that built the community. Each room tells a different story. The railroad room features a model railroad that takes visitors through the historic communities of Lucerne, Tete Jaune, Red Pass and Swift Creek. The lobby contains an exhibit on Japanese Internment Camps that existed in the area. Part of the basement has been converted to a Trapper's cabin with his tools and furs. And the living room is where visitors gain a perspective on the life of the early settlers. The adjacent Museum Annex was renovated in 2008 to showcase farming and logging exhibits — some of the early occupations of the area. A wide variety of interesting artifacts are all on display. You can check www.valemountmuseum.ca to see a virtual tour of some of our exhibits and online exhibits with photos from our archives.



Valley Museum & Archives

THE EXHIBITION area is at the Museum/Library building on Dominion Street in McBride. Exhibitions change every few weeks and range from exhibits of local and regional artists, schools and local historic, industrial, seasonal and archival subjects.

The actual museum area is about 450 square feet but only a short walk down to First Avenue brings visitors to a historic display of railway photographs at the Grand Trunk station. On Second Avenue is a display of local antique farm equipment. Beside Main Street in the park is the historic cinder path by the spruce trees, one of northern B.C.'s oldest remaining sidewalks. It was built with cinders from the railway roundhouse starting in 1913. McBride is in the Robson Valley, which is part of the majestic Rocky Mountain trench.



The Details

- LOCATION** 1090 Main Street. Valemount is located approximately 300 kilometres southeast of Prince George.
- ADMISSION** \$2 for adults; \$1 for children; \$5 per family.
- HOURS** Open Tuesday through Saturday 10 am - 5 pm during May and June. For July and August, open Monday through Friday, 10 am - 8 pm, Saturdays and Sundays 10 am - 5 pm.
- AMENITIES** Gift shop, picnic grounds, main level and museum annex are wheelchair accessible.
- CONTACT** 250-566-4177

The Details

- LOCATION** Museum/Library building 241 Dominion Street, McBride.
- ADMISSION** By donation.
- HOURS** Tuesday 10 am - 5 pm, 7 pm - 9 pm, Wednesday 10 am - 2 pm, Friday 2 pm - 9 pm, Saturday 2 pm - 5 pm, Extended hours in summer.
- CONTACT** 250-569-2503

**1 FREE
ADMISSION +**

The first 100 visitors through the door get a free travel mug. Ask for details.

< **COUPON**

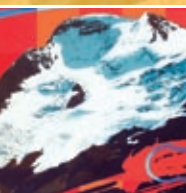
**1 FREE
TRAVEL MUG**

The first 100 visitors through the door get a free travel mug. Ask for details.

< **COUPON**

Whistle Stop Gallery

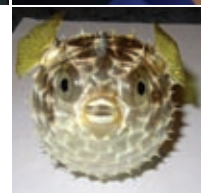
NESTLED IN the beautiful Robson Valley, the lovely town of McBride welcomes visitors to its Heritage Train Station and Whistle Stop Gallery. The gallery is in McBride's historic train station, built in 1919 as a Grand Trunk Pacific Railway divisional point, and restored in 2002.



The Gallery attracts thousands of visitors each year from all over the world. Shoppers, browsers and history buffs can see an incredible range of original artwork created by members of the non-profit Whistle Stop Gallery Society. The station is home to photos and mementos tracing McBride's pioneer past and the Gallery stocks many books written about the history of the region by local authors. A visit to the Heritage Train Station and Gallery can include a fresh cup of coffee and other treats from The Beanery, also located in the old station.

The Exploration Place

SURROUND YOURSELF with the extraordinary, the historical, the amazing, the past and the future at The Exploration Place, Prince George's number one adventure spot for the entire family! It's a strictly hands-on experience where children and adults can touch, feel and



thoroughly learn about a diverse range of subjects. Innovative exhibits allow visitors to explore the last days of the Titanic, learn about Canada's Indian Residential Schools, the prison system and the evolution of the motorcycle.

Part of the charm of the facility is its location, right in the heart of Prince George's expansive Fort George Park. Set amongst the cottonwood trees, with the scenic cutbanks of the Fraser River as a backdrop, The Exploration Place is the perfect start for your day long adventure.



The Details

LOCATION Main Street, McBride.
ADMISSION Free.
HOURS 10 am - 4 pm all year round except holidays.
AMENITIES Gift shop, café, active VIA rail stop.
CONTACT 250-569-8891

The Details

LOCATION Fort George Park, Prince George.
ADMISSION \$10.95 for a full day pass, including SimEx adventure ride; \$8.95 for children. Discounts are available for family, student and senior admission.
HOURS Open seven days a week during the summer months, and Wednesday through Sunday during the winter, from 10 am - 5 pm.
AMENITIES Gift shop, picnic grounds.
CONTACT 250-562-1612; toll free 1-866-562-1612

**5% OFF
MERCHANDISE**

From the gallery Gift Shop

< **COUPON**

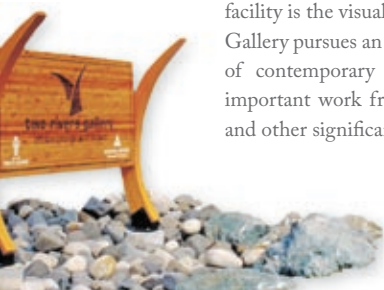
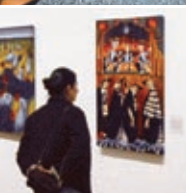
**\$10 OFF
FAMILY DAY PASS**

One day's admission including a SimEx Motion Simulator Ride for only \$19.95+GST for 2 adults and up to 4 kids.

< **COUPON**

Two Rivers Gallery

WHERE CREATIVITY FLOWS and artistic excellence fascinates — Two Rivers Gallery offers one of northern British Columbia's most enjoyable cultural experiences. Join in the fun with artistic experimentation downstairs in the hands-on make Art make Sense room. Visit the Shop



at the Gallery to choose from the most amazing variety of craft and gift items anywhere in the region. The upstairs Atrium and studios are alive with art classes, special events and creative play for young children in the Wildside. Constructed and finished to the highest standards to host exhibitions of international calibre, the facility is the visual arts headquarters for the region. The Gallery pursues an exciting and well-developed program of contemporary art exhibitions and has exhibited important work from the National Gallery of Canada and other significant public collections.

Railway & Forestry Museum

CLIMB ABOARD vintage rail coaches from the early 1900's or stand next to the giant steam crane that hauled derailed locomotives back on track! The museum celebrates the two industries that built our communities — Forestry and the Railroad — with indoor exhibits and



acres of artifacts including more than 70 pieces of rolling stock, nine historical buildings and a working miniature railway. Steam and electric locomotives, massive wooden snowplows, box cars, baggage cars and cabooses are all on display. Likely the most beautiful of all the artifacts is the Nechako Coach, decorated in the official colours of the historic Grand Trunk Pacific Railway. Events such as the Family Fun Days and Friends of Thomas Days make the museum a hive of activity for young and old.



The Details

LOCATION	Downtown Prince George at 725 Civic Square, the Gallery is within easy walking distance to many hotels, restaurants and coffee shops.
ADMISSION	\$5 for adults; \$4 for seniors/students; \$2 for children 5-12, under 5 free. A special family rate is also available. Free admission on Thursdays from 10 am - 9 pm.
HOURS	Open daily from 10 am - 5 pm, except on Thursdays, when the gallery is open until 9 pm.
AMENITIES	Gift shop.
CONTACT	250-614-7800

The Details

LOCATION	Just a five-minute drive from downtown Prince George, next to Cottonwood Island Park on River Road.
ADMISSION	Summer: \$6 for adults; \$5 for seniors/students; \$3 for children, under 3 free; \$18 per family; Minirail Pass \$2; Winter: by donation.
HOURS	Summer: May long weekend to September, open seven days a week; Winter: September to May long weekend, Tuesday through Saturday, 11 am - 4 pm.
AMENITIES	Gift shop, picnic grounds, tours.
CONTACT	250-563-7351

**1 FREE
FAMILY ADMISSION**

2 adults and dependant children

< **COUPON**

**1 FREE
CHILD ADMISSION**

when an adult admission is purchased. Not to be combined with any other offer or not valid during special events. One coupon per visit. Coupon code GR2009.

< **COUPON**

Huble Homestead Historic Site

TRAVEL BACK IN TIME and explore our pioneer heritage, when days were spent running the household, working in the blacksmith shop or perhaps trapping animals and selling furs. Share the secrets of the past and the beauty of the untamed wilderness on the grounds



of this bustling little homestead and trading post. Here you will find the historic Huble house, general store and outbuildings. Experience first hand how the Huble Family lived day to day, gardening, freighting supplies across the Giscome Portage and tending animals.



Mackenzie & District Museum

MACKENZIE was one of the many planned communities born out of the forestry resource boom in the 1960's and the Museum has documented every step of this energetic community's growth. Photographs colourfully illustrate the remarkable job contractors undertook in



building roads, homes, mills and even creating Canada's largest man-made lake, in the wilderness of northern B.C. Perhaps the most important treasures are a series of portraits by Marge McDougall, who created oil paintings of First Nation's men and women through 1959 to 1965. The museum will also introduce you to the massive 178-ton tree crusher used during the creation of Williston Lake from 1964 to 1966.



The Details

- LOCATION** 40 kilometres north of Prince George off Highway 97. Turn right on Mitchell Road and follow the well maintained road six kilometres to the Homestead site.
- ADMISSION** By suggested donation of \$5 for adults; \$3 for children and seniors; \$10 per family.
- HOURS** 10:00 am - 5:00 pm everyday from May long weekend through Labour Day and from 10:00 am - 5:00 pm on weekends only from Labour Day to Thanksgiving.
- AMENITIES** General store, gift shop and food services.
- CONTACT** 250-564-7033

The Details

- LOCATION** The Mackenzie & District Museum is located at 86 Centennial Street, about 190 kilometres north of Prince George.
- ADMISSION** By donation.
- HOURS** Open June, July and August, Tuesday to Saturday, 9 am - 5 pm and from September to June, Tuesday to Friday, 10 am - 2 pm.
- AMENITIES** Gift shop.
- CONTACT** 250-997-3021

**10% OFF
MERCHANDISE**

From the Seebach & Huble General Store. Members receive 20% off. Cannot be combined with any other offer.

< **COUPON**

**1 FREE
TRAVEL MUG**

The first 100 visitors through the door get a free travel mug. Ask for details.

< **COUPON**

Where to find
A GOLDEN RAVEN EXPERIENCE



1 **Valemount Museum**
Valemount, BC
250-566-4177
valemountmuseum.ca

2 **Valley Museum & Archives**
McBride, BC
250-569-2503
mcbridemuseum.ca

3 **Whistle Stop Gallery**
McBride, BC
250-569-8891
whistlestopgallery.org

4 **The Exploration Place
Science Centre & Museum**
Prince George, BC
250-562-1612 or 1-866-562-1612
theexplorationplace.com

5 **Two Rivers Gallery**
Prince George, BC
250-614-7800 or 1-888-221-1155
tworiversartgallery.com

6 **Railway & Forestry Museum**
Prince George, BC
250-563-7351
pgrfm.bc.ca

7 **Huble Homestead
Historic Site**
Prince George, BC
250-564-7033
hublehomestead.ca

8 **Mackenzie &
District Museum**
Mackenzie, BC
250-997-3021
mackenziemuseum.ca



* Artist: Elmer Gunderson.
To view this item, visit the Two Rivers Gallery
in Prince George, BC.



**A GOLDEN RAVEN
EXPERIENCE**

www.goldenraven.ca



REGIONAL DISTRICT
of Fraser-Fort George

The Golden Raven Experience is a cultural branding project initiated by the Regional District of Fraser-Fort George
155 George Street, Prince George, B.C. V2L 1P8
Telephone 250-960-4400 Toll Free 1-800-667-1959