

# The GOLDEN RAVEN

ART GALLERIES, MUSEUMS & HISTORIC SITES  
IN NORTH CENTRAL BRITISH COLUMBIA



**A GOLDEN RAVEN  
EXPERIENCE**

ARTS | CULTURE | HERITAGE

[www.goldenraven.ca](http://www.goldenraven.ca)

*Upcoming events, workshops,  
stories and more!*





**PAGES 4-11**

**The Exploration Place Science Centre & Museum**

333 Becott Place, Prince George, BC

Phone: 250-562-1612

[www.theexplorationplace.com](http://www.theexplorationplace.com)



**Two Rivers Gallery**

**PAGES 18-25**

**Two Rivers Gallery**

725 Civic Plaza, Prince George, BC

Phone: 250-614-7800

[www.tworiversgallery.com](http://www.tworiversgallery.com)



*Travel north on  
Highway 97 & turn  
right on Mitchell Rd.*

**PAGES 12-13**

**Huble Homestead Historic Site**

40 km north of Prince George, BC

Phone: 250-564-7033

[www.hublehomestead.ca](http://www.hublehomestead.ca)



**PAGE 28**

**Barkerville Historic Town**

85km east of Quesnel

Phone: 1-888-994-3332 Ext. 29

[www.barkerville.ca](http://www.barkerville.ca)



PRINCE GEORGE & REGION

**PAGES 14-15**

**Prince George Railway & Forestry Museum**

850 River Road, Prince George, BC

Phone: 250-563-7351

[www.pgrfm.bc.ca](http://www.pgrfm.bc.ca)



Fort St. James  
National Historic Site  
[parks canada.gc.ca](http://parks canada.gc.ca)

Lieu historique national  
de Fort-St. James  
[parks canada.gc.ca](http://parks canada.gc.ca)

**PAGE 29**

**Fort St. James National Historic Site**

Fort St. James, BC

Phone: 250-996-7191

[www.parks canada.gc.ca/fortstjames](http://www.parks canada.gc.ca/fortstjames)



**PAGE 26**

**Valemount Museum**

1090 Main Street, Valemount, BC

Phone: 250-566-4177

[www.valemountmuseum.ca](http://www.valemountmuseum.ca)



**PAGE 30**

**Valley Museum & Archives**

241 Dominion Street, McBride, BC

Phone: 250-569-3000

[www.valleymuseumarchives.ca](http://www.valleymuseumarchives.ca)



MACKENZIE & DISTRICT MUSEUM

**PAGE 27**

**Mackenzie & District Museum**

86 Centennial Drive, Mackenzie, BC

Phone: 250-997-3021

[www.mackenziemuseum.ca](http://www.mackenziemuseum.ca)



**PAGE 31**

**Whistle Stop Gallery**

Heritage Railway Station at First and Main

McBride, BC

Phone: 250-569-8891

[www.whistlestopgallery.org](http://www.whistlestopgallery.org)



REGIONAL DISTRICT  
of Fraser-Fort George

1967-2017 50 years of  
building strong communities

## EVENT CALENDAR ON PAGES 16-17

CHECK OUT THE LATEST EVENTS FROM EACH MEMBER

Interested in being a part of our publication?

E-mail Jeff at the Regional District: [jelder@rdffg.bc.ca](mailto:jelder@rdffg.bc.ca)

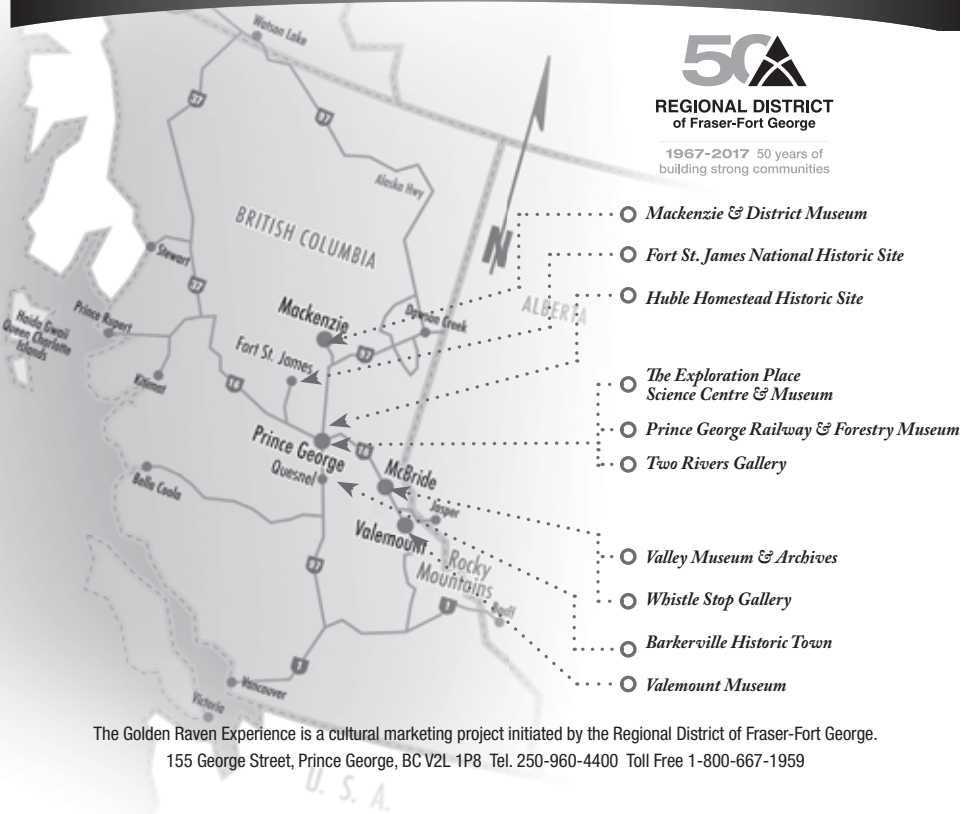
On the cover: Visit Fort St. James National Historic Site of Canada for free all season  
to celebrate Canada's 150th birthday!

# MAP OF OUR AREA ... COME EXPLORE!



**REGIONAL DISTRICT**  
of Fraser-Fort George

1967-2017 50 years of  
building strong communities



The Golden Raven Experience is a cultural marketing project initiated by the Regional District of Fraser-Fort George.  
155 George Street, Prince George, BC V2L 1P8 Tel. 250-960-4400 Toll Free 1-800-667-1959

## Year round discoveries for all ages with your Exploration Place membership!

THE  
**EXPLORATION**  
Science Centre and Museum **PLACE**

A membership for two adults and up to four children is only \$95.00 (+GST) for the year! Membership at the museum entitles you to:

### Member Perks:

- FREE or reduced admission to hundreds of science centres and museums in North America through a reciprocal agreement with the Canadian Association of Science Centres and the Association of Science-Technology Centers. Certain restrictions may apply.
- Unlimited general admission to our galleries and travelling exhibits with your valid membership.
- FREE Quarterly, Golden Raven newsletter with information about upcoming exhibitions, programs, special events and more.
- Invitations to exhibit openings, receptions and special member events.
- Personalized membership card.
- Invitation to attend and vote at The Exploration Place Annual General Meeting.

### Member Discounts:

- 10% off merchandise from our gift shop, excluding consignment items.
- Special member rates on birthday party packages and room rental fees.

### Making a Difference:

By purchasing a membership at The Exploration Place, you are supporting a Northern BC non-profit organization and registered charity whose mission is to preserve our local history and foster lifelong learning in the areas of science, technology and history.

# What's Happening

## THE LITTLE PRINCE STEAM ENGINE IS BACK!

The Little Prince Steam Engine is on the rails for the 2017 season (weather permitting)!

### **Ticket Prices for 2017:**

- \$1.00 - Children under 2
- \$2.50 - Children 2-18 years  
(Children under 8 years old must ride with an adult.)
- \$3.50 - Adults
- \$2.50 - Seniors
- \$60.00 - Family Rail Membership\*

*\*The Family Rail Pass is an exclusive offer for our museum members with a VALID Family Membership! For \$60.00 you can add a family rail pass to your family membership and ride the rails when the Little Prince is on the track! You MUST bring your VALID membership cards with photos and your rail pass (key fobs will not be accepted at the train).*

Hours of Operation (Weather Permitting):

- May to August - Thursday to Monday from 12pm-8pm
- September 5th - Labour Day 12pm-8pm
- October 8th-10th - Thanksgiving weekend

*Please note that the train cannot run in inclement weather. If you are unsure about the status of the train due to weather, please call us before coming down to the park: 250-562-1612.*



### **THANK YOU TO OUR LITTLE PRINCE SPONSORS!**

City of PG  
Wood Wheaton  
PG Citizen  
Pioneer Rail Contracting  
Greg Jago Trucking  
KJM Sales  
Lumisave Industrial LED  
Technologies Ltd.  
Rolling Mix Concrete



## ICE CREAM SCOOP SHOP!

Come enjoy local, handmade, craft ice cream made right here in Prince George, BC. Frozen Paddle uses local and seasonal ingredients when possible to create the best ice cream. All ice cream sold in the Fort George Railway Station supports the operation of the Little Prince Steam Engine!



# Summer Events



## JUNE 21ST NATIONAL ABORIGINAL DAY

We hope you will join us as we offer FREE admission to our galleries on June 21st as we celebrate the grand opening of our new permanent First Nations Gallery. We acknowledge the financial assistance of the Province of British Columbia, Regional District of Fraser Fort George and BC Arts Council.



REGIONAL DISTRICT  
of Fraser-Fort George



BRITISH COLUMBIA  
ARTS COUNCIL  
Supported by the Province of British Columbia



BRITISH COLUMBIA  
The Best Place on Earth

Look For Us On Social Media!



## EXPLORERS URBAN GARDEN - A PERFECT PLACE FOR A PICNIC!

Stop by our garden this season to see what the kids in our childcare programs are growing! This is the sixth year for our garden and we are excited as we continue learning about the environment, composting, food security and plants!



# ... Summer Events

**JUNE 23 & 24**

## **LIVE HISTORY WORKSHOPS & SHOWS**

History comes alive within the Live History workshops, and teaches the group about local legends. Our mysteries include lessons in math, patterns, language and visual arts. Our mystery building workshop is hands on, interactive, and wildly fun! Participants who are fans of mystery novels, shows and theatre will learn how to build a mystery while learning about their local history in a way they have never seen it before. Build a mystery to stump friends and family, or learn how to become a sleuth during your favourite mystery programs! Join us June 23 & 24 for these fun and exciting Live History interactive performances (exact times TBA).



*Live History*

**JULY 1**

## **CELEBRATE CANADA DAY WITH US!**

We are pleased to continue our Canada Day tradition of admission by donation including free activities inside and out!

Activities include:

- BBQ to raise money for our Science Alliance Summer Camps for kids. Make sure to stop by our BBQ sponsored by Wendy's and Integr8!
- We welcome you to join us at noon to celebrate our nation's birthday with free cake!

We wouldn't be able to offer such an awesome day without the help of these supporters:

Canada



BRITISH COLUMBIA  
The Best Place on Earth



BRITISH COLUMBIA  
ARTS COUNCIL  
Supported by the Government of British Columbia

# Echoes in the Ice

## FINDING FRANKLIN'S SHIP

TRAVELLING EXHIBITION



*Invitigator: Found! (L'Investigator, retrouvé!) Collage - Rik van Glinenkamp 2010*

JULY 14

## **ECHOES IN THE ICE: FINDING FRANKLIN'S SHIP**

A travelling exhibition from  
Canada Science and Technology Museum

Ever since explorers began searching for a Northwest Passage over 400 years ago, the Arctic has been a fascinating and important area of study, rich with drama, adventure, even tragedy.

Using artifacts, images, audiovisual presentations, and art, Echoes in the Ice: Finding Franklin's Ship examines Arctic exploration past and present, profiles the explorers involved in the search for the Northwest Passage, and decodes the mysteries of the Franklin Expedition of 1845, when an entire crew vanished in the Arctic during an ill-fated search.

These stories are told using artifacts such as instruments and objects dating from the same period as the Franklin Expedition, as well as contemporary scientific objects used by present-day scientists investigating the high Arctic.



**CANADA SCIENCE AND  
TECHNOLOGY MUSEUM**



## HOHUDUL'EH-A: A PLACE OF LEARNING

Growing out of our partnership with the Lheidli T'enneh First Nation and the Cultural Expressions exhibit (2013), we have been named by them as their official repository for all artefactual material related to their culture and history. We have established an atmosphere of trust and understanding with the Lheidli T'enneh and their Elders. As trust has grown between us, the Lheidli T'enneh have reached out to the Museum with new images, archival documents, oral histories, artifacts and friendship; all of which are helping us to compile a Lheidli collection and body of knowledge, that will ultimately form the basis for a collective understanding of their culture and their contributions to the development of this Region. This partnership allows the Lheidli Nation to meaningfully engage with their own heritage and culture while also allowing the broader public access to greater understanding about the rich history and culture of Canada's First Nations.

By working towards a central access point for the Lheidli collected heritage we ensure not only that our exhibits reflect both the contemporary and historical demographics of our area, but it will also make the collection easily accessible for all members of our community.



## MAKE YOUR CHILD'S BIRTHDAY ONE OF A KIND!

Book your child's birthday with The Exploration Place and we will provide you with an energetic facilitator in a private room with access to our kitchen. We will take care some decorations and you don't have to worry about the mess at the end. On top of that, this two hour party package let's all party goers play inside our galleries and children will get a free pass to come visit us again! If you are a member don't forget to let us know so you receive your member discount! Please check out our term, conditions and additional information on our website!

Let the fun begin by choosing a theme and call us to book your party:

- **Supper Surprise** (recommended for ages 8 and up)
- **Critter Parade** (recommended for ages 3 and up)
- **Outer Limits** (recommended for ages 3 and up)

Plans are underway at The Exploration Place to develop a new permanent First Nation's gallery within the museum. This Gallery will be titled "Hohudul'eh-a: A Place of Learning". It will consist of a variety of Dakelh artifacts including traditional Dakelh clothing, archaeological stone tools, baskets, a dugout canoe and interpretive information and images.

The entrance to the new gallery will be built as a traditional pit-house. Once inside, visitors will be immersed in Dakelh culture and tradition.

Benching will be built around the pit-house entrance, facing the pit-house's central hearth as the perfect place to hold school programs and engage up to 30 children.

With Lheidli T'enneh partnership, this exhibit wishes to honor the Lheidli T'enneh and their traditional territory while teaching visitors the importance of Dakelh culture and the history of the Lheidli T'enneh Nation.

We hope you will join us on June 21st for the grand opening of "Hohudul'eh-a: A Place of Learning", a permanent First Nations Gallery at The Exploration Place.

# 2017 SUMMER CHILDCARE PROGRAMS

Visit our website, [www.theexplorationplace.com](http://www.theexplorationplace.com),  
for up to date information.

Get excited about science at The Exploration Place, a hands-on Science Centre that encourages discovery, learning, and investigation. Through experiments, demos and activities, children will experience a variety of scientific fields. Our week-long summer day camps and month-long licensed summer care program promote creative thinking and excitement about learning. Games, field trips, and outdoor play balance a fun-filled day!

## Register online at

[www.theexplorationplace.com](http://www.theexplorationplace.com)

for our week long Science Alliance  
camps or monthly Fort George Explorers  
Summer Care program.

FORT GEORGE  
**EXPLORERS**  
Summer Care

**Licensed, full-time spaces for  
children ages 5-12**

**Monday-Friday 8:00am-5:30pm**

(Activities run from 9:00am-4:00pm)

July 3 - July 28 = \$715.00

July 31 - September 1 = \$715.00 (**FULL**)

## science **ALLIANCE** Summer Camps

### Primary Camp for children entering grades 1, 2 or 3

July 3-7	\$199
July 10-14	\$199
July 17-21	\$199
July 24-28	\$199
July 31 – August 4	\$199
August 8-11 (4 day camp, no camp Mon. Aug. 7 - BC Day)	\$159
August 14-18	\$199
August 21-25	\$199

### CAMP HOURS:

**8:00am-5:30pm**

(camp activities run  
from 9:00am-4:00pm)



# 2017-2018 FALL CHILDCARE PROGRAMS

For more detailed information, and to register online for one of our licensed childcare programs, please visit: [www.theexplorationplace.com](http://www.theexplorationplace.com)

WOOD WHEATON

**Early Explorers**  
**Preschool**

## Registration for the 2017/2018 school year opens on May 29, 2017!

This program is for potty trained children between the ages of 2.5-5 years

Government subsidy accepted.

Our licensed preschool program is delivered by a team of qualified and dedicated Early Childhood Educators and Assistants. Your child will engage all of their senses as they discover, explore and investigate science and heritage through play, hands-on activities, and demonstrations. Your child will have valuable experiences in a fun, non-intimidating environment that fosters social, physical, emotional, and intellectual development as they prepare for Kindergarten. With the added benefit of stunning outdoor spaces and the Explorers Urban Garden project, this program is unlike any other in our area!

Choose one of the following 4 sessions for your convenience (spaces are limited):

Monday, Wednesday & Friday morning	8:45am-11:15am	\$165.00/mo
Monday, Wednesday & Friday afternoon	12:15pm-2:45pm	\$165.00/mo
Tuesday & Thursday morning	8:45am-11:15am	\$135.00/mo
Tuesday & Thursday afternoon	12:15pm-2:45pm	\$135.00/mo

**For more information or to register, please visit: [www.theexplorationplace.com](http://www.theexplorationplace.com)**

FORT GEORGE

**EXPLORERS**  
After-School Care

## September 2017 to June 2018

### Registration for the 2017/2018 school year opens on May 29, 2017!

Hours: 2:00pm-6:00pm, Monday to Friday

This program is for children entering Kindergarten to Grade 7  
(On Non-Instructional Days childcare hours are from 8:00am-6:00pm)

Our licensed after-school care program encourages discovery, learning and investigation in our hands-on Science Centre & Museum, including the Explorers Urban Garden project. Throughout the year, your child will have the opportunity to participate in experiments, demos, and activities in a variety of scientific fields. We also offer after-school care transportation from your child's school\* to The Exploration Place. Full-time and part-time spaces are available and we do accept government subsidy.

*\*Please contact us for more information about school transportation, as we do not pick up at every school within School District #57, and spaces are limited.*



**BRITISH COLUMBIA**

The Best Place on Earth

We acknowledge the financial support of the Government of British Columbia

## Seniors' Day

This stress-free day trip to Huble Homestead on Sunday, June 11 is specifically geared to seniors and other individuals who have difficulty visiting Huble Homestead. For just \$15, registration for this event includes a chartered bus ride from one of the multiple pick-up locations in the city, courtesy of Pacific Western Transportation, and a visit to the homestead for lunch, entertainment, and a guided tour. As a bonus, all participants receive 10% off any purchases in the General Store! To save your spot, call 250-564-7033 by June 8.

Thank you so much to Pacific Western Transit, without whom this event would not be possible!



*Pacific Western Transport is a long-time sponsor of Seniors' Day. Thank you!*



*Celebrate Canada's 150th just like Prince George's pioneers, complete with ladies' nail driving contests! Photo courtesy The Exploration Place.*

## Homicide on the Homestead

Our popular Homicide on the Homestead: A Murder Mystery is back, times two! We're sending our participants back to the 1930s for these historical whodunnits, scheduled for Saturday, June 24 and Saturday, September 16.

Registration for the June event is now open; visit our website to buy your tickets before June 12 and we'll send you your invitation, character assignment, and costume suggestions. On the day of the event you'll receive your objectives and enjoy an afternoon of mingling, hors d'oeuvres, and detective work. We'll be awarding prizes for best costume, best performance, and for correctly guessing the murderer – no acting experience needed, but a good sense of enthusiasm is required! Registration for September's mystery will open on August 21.

To register, visit [www.hublehomestead.ca](http://www.hublehomestead.ca). For questions about this incredibly fun afternoon event, contact us by phone at 250-564-7033 or at [admin@hublehomestead.ca](mailto:admin@hublehomestead.ca).



[www.hublehomestead.ca](http://www.hublehomestead.ca)



## Summer Fun!

We have events happening all season long! Join us for one of our summer celebrations - the whole family will have a blast! Remember we're dog friendly!

### June 11 – Seniors' Day (registration required)

A relaxing day trip to Huble Homestead, featuring lunch, entertainment, tours, and transportation generously provided by Pacific Western Transit.

### June 17 – Sherlock Saturday

Put your investigatory skills to good use! Bring the whole family to help you crack the case by following clues and solving puzzles all over the site.

### June 24 – Homicide on the Homestead

(registration required) Step into the 1930s and join us in character to solve a good old-fashioned whodunit! A fun afternoon featuring hors d'oeuvres, prizes, and a ton of intrigue!

### July 1 – Dominion Day

Celebrate Canada's birthday the old-fashioned way! This day has been 150 years in the making, so join us for cake, demonstrations, games, and entertainment! Be sure to check out our Canada 150 exhibit, "Parades of Patriotism", sponsored by the Prince George Community Foundation, City of Prince George, and the Government of Canada.

### July 15 – Kids' Carnival

A favourite event for kids, and kids at heart! A day jam-packed with carnival games, crafts, games, magic shows, and so much more!

### July 22 – Scavenger Saturday

Bring a group of family or friends and work together to check off all the items and tasks on a scavenger hunt list! Work at your own pace and explore Huble Homestead in a novel new way.

### August 6 & 7 – Homestead Days

Step into Prince George's pioneer past for two days filled with heritage demonstrations, old-fashioned games and races, lunch auction, music, and more!

### August 19 – Sherlock Saturday

Show off your sleuthing skills and follow the clues to explore the homestead and solve the mystery! If you get stuck, our staff is always willing to help!

### September 3 & 4 – Potato Festival

Celebrate the mighty spud, a vegetable the Huble family once grew by the acre! Learn more about heirloom potato varieties, take part in games and contests, and try something new from our potato themed menu!



## Huble Homestead on the Town

Find us at events around Prince George this summer:

**Friday & Saturday, July 7 & 8 - BMO Kidz Art Dayz at Two Rivers Gallery**

**Sunday, July 16 – Downtown Summerfest**

**Thursday to Sunday, August 17 to 20 – Heritage Lane at the BCNE**



*Join us for crafts at Downtown Summerfest on July 16!*



## Art Exhibit: "Hope in the North"



Rene Jaspers' Art Exhibit, "Hope in the North" will be on display in the Gallery of the Railway and Forestry Museum from April 12 until June 30, 2017. The Art Project 'Hope in the North' is fueled by Rene's passion to help others. She loves the northern parts of British Columbia and seeks to show everyone the beauty here. Starting at Prince George and ending in Prince Rupert, Rene traveled 25km, limited herself to no more than 5 steps from the car and snapped some pictures. With this limited vision she found a beautiful world that exists along our Highway 16 corridor. This project is meant to encourage tourists and locals to go out and experience the north. Funds from the sale of the paintings will go toward helping others to receive their full driver's license and safer transportation.

*The Highway of Hope Foundation aims to bring safer transportation to the north. We will be working in conjunction with the Northern Colleges to bring Transportation opportunities to young low income people who need their driver's license. The Children and Families and ICBC just announced a program and*

*are looking to help children in care to receive their license, We are worried about those who have already been aged out of the system and need the supports to accomplish their dreams. That we are able to have autonomy here in the North is vital.*

### Let's get involved!

### Memberships and the Board of Directors

Become a member of the Railway and Forestry Museum and receive membership benefits:

- FREE admission during operating hours
- Access to our RFM library
- Invitations to membership appreciation events and meetings
- 50% discount on special event admission\*
- 10% off all facility rentals and gift shop merchandise
- Admission discounts to Barkerville, Fort St. James, and the West Coast Railway and Heritage Park in Squamish, BC
- Discounts at The Norton Ranch, McQuik Lube & Oil, and Huble Homestead General Store

Members can apply to be on the Railway and Forestry Museum's board of directors. If you're interested in being a board member, or simply a member of the Railway and Forestry Museum, contact us at (250) 563-7351 or [admin@pgrfm.bc.ca](mailto:admin@pgrfm.bc.ca).

\*subject to change



### Hours of Operation

The Central BC Railway and Forestry Museum is now operating on our summer hours: open 7 days a week from 10 a.m. to 5 p.m. The Cottonwood Minirail Train runs daily (weather permitting).



### We are Dog Friendly

Join us at the Railway and Forestry Museum with all your family and friends ...even the four legged furry ones.



RAILWAY & FORESTRY MUSEUM  
PRINCE GEORGE & REGION

# RAILWAY & FORESTRY MUSEUM

AUGUST 26, 2017

## *Family Fun Day at the Railway and Forestry Museum!*

Join us August 26, 2017 from 11 a.m. to 4 p.m. for the final HURRAH of summer . . . the Family Fun Day at the Railway and Forestry Museum.

Family Fun Day includes:

- Interactive activities with local organizations
- Games and crafts
- Mini Rail Rides
- Face Painting
- Pancake Breakfast and BBQ lunch for purchase
- much more!!

Admission is FREE with a non-perishable food donation.

Like us on 

Follow us on 

## *The Birthday Party Express*

Children receive a train ride on the Cottonwood Minirail Train \*

Games and a Tour

Hotdog, Popcorn and

a Drink in the Old Diner Car \*

A Present for the Birthday Child  
Parties approximately 1.5 hours

*(There must be at least one supervisory adult)*

Includes admission for the Museum which allows your group to take in the sights and sounds that the museum has to offer. Please contact the Railway and Forestry Museum for additional information at (250) 563-7351 or [trains@pgrfm.bc.ca](mailto:trains@pgrfm.bc.ca)

*\*Members receive a 10% discount on Birthday Parties and Facility Rentals*

*\* Weather permitting*

*\*\* Subject to change without notice*



RAILWAY & FORESTRY MUSEUM  
PRINCE GEORGE & REGION

## *Volunteers are our Steam!*

If you're looking for a way to contribute to the community in a fun and historic environment, volunteer at the Railway and Forestry Museum today! There are lots of areas that need your help for the museum to go full steam ahead into 2017. Contact us at (250) 563-7351 or [admin@pgrfm.bc.ca](mailto:admin@pgrfm.bc.ca) about opportunities at the Railway and Forestry Museum!

## *Friends of Thomas Days* August 11th, 12th and 13th

Join us on August 11th, 12th and 13th between 10:00 a.m. and 4:00 p.m. The Museum will be transformed into

Sodor and the characters of Thomas & Friends. Kids can complete a

"Friends of Thomas" Activity

Passport by visiting the activity filled stamping

stations. There will be a pancake breakfast and BBQ lunch for purchase. Come down and bring the family for a full day of activities!!!



### *Minirail Train Rides*

Create a "Friends of Thomas" Craft  
Summer activities  
And much more!

Regular admission rates apply.  
Members receive 50% off admission rates for this special event!

*Looking for a unique souvenir or gift?  
Come check out our gift shop for special  
Prince George, Railway and Forestry  
pieces and gifts.*

Visit us at [www.pgrfm.bc.ca](http://www.pgrfm.bc.ca)

**JUNE**

Monday 5: Pro-D Day! 50% off admission all day!  
 Saturday 10: Early Years Health Fair in Partnership with The Exploration Place  
 Monday 12: Adult Speaker Series @7pm  
 Wednesday 21: National Aboriginal Day celebrations & Grand opening of "Hohudul'eh-a: A Place of Learning" Permanent First Nations Gallery  
 Friday 23: Live History Workshops  
 Saturday 24: Live History Shows  
 Friday 30: Pro-D Day! 50% off admission all day! & First day of FGE Summer Care

**JULY**

Saturday 1: Celebrate Canada's 150th with us!  
 Tuesday 4: First Day of Science Alliance Summer Day Camps  
 Thursday 6: Exhibits Last Day! Keva Planks  
 Friday 8 – Thursday 13: Exhibit Change Over! George Phillips Exhibit Gallery Closed  
 Friday 7 & Saturday 8: Visit us @ BMO Kidz Art Daze  
 Monday 10: Adult Speaker Series  
 Friday 14: Exhibit Opening! Echoes in the Ice: Finding Franklin's Ship  
 Sunday 16: Visit us @ Summerfest  
 Friday 21: Visit us @ Billy Barker Days in Quesnel

**AUGUST**

Monday 7: BC Day - We are open 9am-5pm! The Little Prince will be running (weather permitting)

[www.theexplorationplace.com](http://www.theexplorationplace.com)



RAILWAY & FORESTRY MUSEUM  
 PRINCE GEORGE & REGION

**JULY**

Saturday 1: Cottonwood Minirail at Fraser Lake for Mouse Mountain Day  
 Sunday 16: Cottonwood Minirail at Downtown Summerfest

**AUGUST**

Friday 11-Sunday 13: Friends of Thomas Days  
 Saturday 26: Family Fun Day

[www.pgrfm.bc.ca](http://www.pgrfm.bc.ca)



MACKENZIE & DISTRICT MUSEUM

Open 10 am to 2 pm, Tuesday to Saturday,  
 September to June  
 During July and August we are open 9am to 5pm,  
 Tuesday to Saturday  
 Phone 250-997-3021 • Email [museum@mackbc.com](mailto:museum@mackbc.com)  
 Each artifact in the Museum has a story  
 and we want to tell the world.

[www.mackenziesmuseum.ca](http://www.mackenziesmuseum.ca)



## Whistle Stop Gallery

The Gallery is open: 9am-5pm daily October - May  
 9am-6pm Sun-Thurs and 9am-8pm Fri, Sat June - September

Box 107 McBride BC V0J 2E0 • (250) 569-8891

Email: [whistlestopgallery@telus.net](mailto:whistlestopgallery@telus.net)

[www.whistlestopgallery.org](http://www.whistlestopgallery.org)

**JUNE**

Sunday 11: Seniors' Day (registration required)  
 Saturday 17: Sherlock Saturday (self-guided)  
 Saturday 24: Homicide on the Homestead (registration required)

**JULY**

Saturday 1: Dominion Day  
 Saturday 15: Kids' Carnival  
 Saturday 22: Scavenger Saturday (self-guided)

**AUGUST**

Sunday 6 & Monday 7: Homestead Days  
 Saturday 19: Sherlock Saturday (self-guided)

[www.hubblehomestead.ca](http://www.hubblehomestead.ca)



**Fort St. James**  
**National Historic Site**  
[parks canada.gc.ca](http://parks canada.gc.ca)

**JUNE**

Thursday 1: opening day  
 Sunday 4: Easter in June. Free pancake breakfast, giant Easter egg hunt, make and fly a kite and much more.  
 Wednesday 21: Aboriginal Day. Come celebrate our indigenous partner's culture and heritage.

**JULY**

Saturday 1: Canada Day. Eat birthday cake, enter the challenges, bet on your favorite chicken at the races and more.  
 Saturday 22: Salmon Cook-off. Watch up to 6 teams trying for the coveted Salmon Cook of Championship. Visitors can be the judges of these culinary sensations, chicken races, challenges and more.

**AUGUST**

Thursday 10: Walk thru time. An evening event sponsored by the Friends of the Fort St. James National Historic Park.  
 Saturday 12: Caledonia Day. Come celebrate this fall fair style event with exhibits, games, pie auction, challenges and more. Support your local volunteers and groups.

For more info visit  
[www.parks canada.gc.ca/fortstjames](http://www.parks canada.gc.ca/fortstjames)

For events in the community of  
 Fort St. James visit  
[www.fortstjames.ca](http://www.fortstjames.ca)



# Y • AUGUST CALENDAR OF EVENTS



## Two Rivers Gallery

### June

Saturday 3: Join us at McBride Pioneer Days, 10am-3pm  
 Sunday 4: Sunday Open Studio, *Bottle Cap Sculptures*, 1-4pm  
 Thursday 8: *Canada 150 Mosaic Tile Workshop*, 7-8pm  
 Friday 9: Uncork & Unwind Paint Night, *Mandalas*, 7-9pm, \$40 (pre-registration required)  
 Sunday 11: Sunday Open Studio, *Hockey Cards*, 1-4pm  
 Sunday 11: *Canada 150 Mosaic Tile Workshop*, 3-4pm  
 Sunday 18: Sunday Open Studio, *Tiled Trivets*, 1-4pm  
 Sunday 25: Sunday Open Studio, *Haida Manga*, 1-4pm

### July

Saturday 1: Gallery closed, join us in Lheidli T'enneh Memorial Park for Canada Day celebrations, 11am-4pm  
 Sunday 2: Sunday Open Studio, *Canadian Landscapes*, 1-4pm  
 Friday 7: **KidzArt Dayz**, 10am-4pm, Charlotte & Matt Diamond perform at 11am  
 Saturday 8: **KidzArt Dayz**, 10am-4pm, Charlotte & Matt Diamond perform at 1pm  
 Sunday 9: Sunday Open Studio, *Dream Animals*, 1-4pm  
 Monday 10 - Friday 14: Creativity Camp - Colour Play, 9am-4:30pm  
 Monday 10 - Friday 15: Summer Art Club - Aliens & Outer Space, 10am-12pm  
 Saturday 15: Join us at Huble Homestead for the Huble Kids' Carnival 10am-4pm  
 Sunday 16: Join us for Sunday Open Studio, downtown at *Summerfest*, 1-4pm  
 Monday 17 - Friday 21: Creativity Camp - A Splash of Paint, 9am-4:30pm  
 Monday 17 - Friday 21: Creativity Camp - Intense Art: Let's Paint! (9-13yrs), 9am-4:30pm  
 Thursday 20: Opening reception: *Into the Woods & Recent Acquisitions*, 7:30pm-9:30pm  
 Sunday 23: Sunday Open Studio, *Rolled Paper Reliefs*, 1-4pm  
 Monday 24 - Friday 28: Creativity Camp - Teen Week, 9am-4:30pm  
 Monday 24 - Friday 28: Creativity Camp - Abstract Art, 9am-4:30pm  
 Sunday 30: Sunday Open Studio, *Friendship Bracelets*, 1-4pm  
 Monday 31 - Friday Aug 4: Creativity Camp - Let's Draw, 9am-4:30pm  
 Monday 31 - Friday Aug 4: Creativity Camp - Intense Art: Drawing (9-13yrs), 9am-4:30pm

### August

Sunday 6: Sunday Open Studio, *Clay Creations*, 1-4pm  
 Monday 7: Gallery closed, Join us at Lheidli T'enneh Memorial Park for BC Day celebrations, 12-4pm  
 Tuesday 8 - Friday 11: Creativity Camp - The Art of Food, 9am-4:30pm  
 Tuesday 8 - Friday 11: Summer Art Club - Colour Explosion, 9am-4:30pm  
 Sunday 13: Sunday Open Studio, *Monoprint Mania*, 1-4pm  
 Monday 14 - Friday 18: Creativity Camp - Building & Sculpting, 9am-4:30pm  
 Monday 14 - Friday 18: Creativity Camp - Intense Art: Explore the 3<sup>rd</sup> Dimension (9-13yrs), 9am-4:30pm  
 Sunday 20: Sunday Open Studio, *DIY Slime*, 1-4pm  
 Monday 21 - Friday 25: Creativity Camp - Be a Maker, 9am-4:30pm  
 Monday 21 - Friday 25: Creativity Camp - Intense Art: Join the Maker Movement (9-13yrs), 9am-4:30pm  
 Sunday 27: Sunday Open Studio, *Embossing Foil Pictures*, 1-4pm  
 Monday 28 - Friday Sept 1: Creativity Camp - Dramatic Art, 9am-4:30pm

[www.tworiversartgallery.ca](http://www.tworiversartgallery.ca)



### JUNE

Saturday 17: Theatre Royal Summer Show Gala  
 Thursday 29-Sunday July 2: The Spirit of Cariboo Cameron performance

### JULY

Saturday 1: Dominion Day Celebrations  
 Saturday 15: 4th Annual Barkerville Aboriginal Celebration

### AUGUST

Friday 4-Monday 7: 14th Annual Wells Festival of all Things Art  
 Friday 11-Sunday 13: Cariboo Lodge Nol 4 Annual Reunion  
 Saturday 16: Mid Autumn Moon Festival

[www.barkerville.ca](http://www.barkerville.ca)



### JUNE

Life Aquatic by Erick Franz (2 Rivers Art Show)

### JULY

Show space will be closed for renovations, but the office will remain open.

The museum will be open:

Tuesday: 10am - 5pm & 7pm - 9pm; Wednesday & Thursday:

10am - 5pm; Friday: 2pm - 9pm;

Saturday: 2pm - 5pm

[www.valleymuseumarchives.ca](http://www.valleymuseumarchives.ca)

## VALEMOUNT MUSEUM

Open May 16 to June 30th, Tuesday to Saturday 10 to 5

July and August 7 days a week 10 to 6

September Tuesday to Saturday 10 to 5

Saturday, July 1st Canada day celebrations  
 Blueberry Tea in August date to be determined

For up to date events find us on facebook  
 Valemount Museum and Archives





Welcome to our summer students L to R: Alice Brassard, Leah March, Shawn Caldera, Camille Lescarbeau and Hannah Rizun. They'll be busy this summer, working on programs and exhibitions at the Gallery, in schools, and out and about in the Regional District.

**Saturday · June 24 · 2pm**

## Artist's Talk

with Michael Nicoll Yahgulanaas

Free, please join us!



EXHIBITIONS that change every ten weeks · make ART make SENSE with a daily studio activity  
· ART CLASSES for creative spirits of all ages · MAKERLAB and Thursday "Open Make Night" ...  
join our Maker community · SHOP for regional artisans' work, books & beautiful objects ·  
FACILITY RENTAL staff retreats, weddings, Christmas parties · FREE THURSDAYS 10AM-9PM  
SUNDAY OPEN STUDIO drop-in 1-4PM



## Exhibitions Until July 9

### *The Seriousness of Play*

Michael Nicoll Yahgulanaas

This exhibition explores the work of internationally celebrated visual artist, Michael Nicoll Yahgulanaas. His distinctive artwork twists and blends Haida art with a broad range of contemporary cultural references. In *Red: A Haida Manga* (2008), his award winning graphic novel and large-scale mural, the artist draws on Manga aesthetic (an Asian style of comic) and blends it with western and Indigenous stylistic elements, in order to illustrate a story from his family's past. Surreal happenings, colourful characters and contemporary themes permeate Yahgulanaas' artworks and speak to an intersection of cultures that define the contemporary moment.



Michael Nicoll Yahgulanaas, *Tongues*, 2010. Mixed media on paper.



### *Wackem Sackem* Glenn Clark

Clark uses tropes of ice hockey and table hockey games to explore our relationship to this sport and the odd way in which it has become an all but sanctioned vehicle for violence. Clark's paintings incorporate articulated elements that viewers can activate to cause a slash with a stick, for instance, or throw a punch. Scheduled during the hockey playoffs, at a time when hockey preoccupies the lives of many Canadians, this exhibition addresses issues of identity on numerous levels and transcends the typically non-porous boundary perceived between art and sport.



Glenn Clark, *Hack*, 2014. Oil on metal, acrylic on panel.

### Rustad Galleria

May 18 – June 25

Jennifer Ferries: *Quiet Coexistence*

Oil paintings that depict moments of play, contemplation & peaceful solitude experienced by both humans & animals immersed in outdoor environments.

**Opening Reception: Thu • May 18 • 7:30–9pm**

Meet the artist. Free, please join us!

Direct enquiries to: Meghan Hunter-Gauthier  
meghan@tworiversgallery.ca

## Exhibitions Jul 21 to Oct 8

### Opening Reception • Jul 20

*Into the Woods* Tammy Salzl

*Recent Acquisitions : Artwork from the Permanent Collection*

Opening Receptions are free & open to all.  
Refreshments served. Please join us!

7:30<sup>pm</sup> Artist's Talk with Tammy Salzl

8:30<sup>pm</sup> After Party

### *Into the Woods* Tammy Salzl

Based in Montreal, Salzl is a painter working in oil and canvas and in smaller scale on paper. Salzl draws from her own experience as mother of a trans-gendered child and in doing so connects to fundamental ideas of self and identity. Her work focuses around representations of curious characters often placed in improbable locations, for example,



a chaise longue in the middle of a forest. They are often rendered in lurid colour schemes, at times seeming hurt or vulnerable, at other times oddly sage, comfortable and at peace in a world where seven-legged lambs, and other creatures, populate her paintings. Rich in allegory, Salzl's work examines gender and identity by honouring the individual and the sense of self.

### *Recent Acquisitions : Artwork from the Permanent Collection*

The Permanent Collection presently numbers around 400 artworks and represents mostly contemporary artwork by artists from across Canada. This exhibition draws from the collection as part of an annual strategy to showcase new acquisitions, recall past exhibitions from which the work may have been collected and to honour the artists and donors of the work presented here.



- ▲ Charles Bertram Binning. *Girl Deep in Thought*, nd. Ink on paper. Gift of the Estate of Jessie Isobel Binning.
- ◀ Tammy Salzl. *The Chorus*, 2011. Oil on canvas.

TWO RIVERS GALLERY

BMO



# KidzArt Dayz



Two Rivers  
Gallery

**Fri & Sat • July 7 & 8 • 10am–3pm**

**2 Free  
Fun-Filled Days**  
of art-making  
for the whole family!



**CHARLOTTE & MATT  
Diamond**  
On Stage Both Days

**#BMOKidzArt TwoRiversGallery.ca**

**Gallery  
Memberships  
50% off**



**Two Rivers  
Gallery**

## Online Registration for Summer Programs [TwoRiversGallery.ca/learn-create](http://TwoRiversGallery.ca/learn-create) • 250.614.7800

### creativity camp

#### Full Day Camps

for children entering grades 1–8

**Camp Hours:** 9am–4:30pm

(programmed activities: 9:15am–4pm)

**Fees per session:** 194

except Aug 8–11: 155

Jul 10–14	Colour Fun
Jul 17–21	A Splash of Paint
Jul 17–21	Let's Paint! (9–13 yr)
Jul 24–28	Abstract Art
Jul 24–28	Teen Week (13–16 yr)
Jul 31–Aug 4	Let's Draw!
Jul 31–Aug 4	Serious Drawing for the Fun of It (9–13 yr)
Aug 8–11	The Art of Food (short week)
Aug 14–18	Building & Sculpting
Aug 14–18	Exploring the Third Dimension (9–13 yr)
Aug 21–25	Be a Maker
Aug 21–25	Join the Maker Movement (9–13 yr)
Aug 28–Sep 1	Dramatic Art



### Summer Art Club

*Imagine, explore, create...* for 5–10 year olds

**Hours:** 10am–12 noon

**Jul 10–14**

Aliens & Outer Space

**Aug 8–11**

Colour Explosions (short week)



Space is limited. Register online.

[TwoRiversGallery.ca/learn-create](http://TwoRiversGallery.ca/learn-create)

250.614.7800

Gallery Members receive 10% discount!





## SUNDAY Open Studio



### Sundays 1–4 pm

Free for members or  
incl with admission:  
\$15 per family.

Drop by to exercise  
your artistic side.  
Bring your friends,  
children, partners,  
parents and have  
fun creating side by  
side. **A new project  
every Sunday!**



PORTER AND McMILLAN  
INSURANCE



...where design meets style in  
Northern British Columbia.

Open 7 days a week.

Discover arts & crafts by acclaimed  
local artists, artisans from across Canada, and  
international & contemporary designers.



Running Raven Bamboo Bowl by Tsimshian artist,  
Morgan Green. [NativeNorthwest.com](http://NativeNorthwest.com)



**TwoRivers  
Gallery**



Two Rivers Gallery's is honoured to have received the  
Canadian Museums Association Award of Outstanding  
Achievement in Education at a reception in Ottawa  
last month for our MakerLab Youth Immersion  
Program.

## ArtWorks

Greater creativity is the  
key to entrepreneurship, business development and  
regional economic growth. Develop the skills you need  
to jump-start innovation, increase your competitive  
advantage and grow your business! Our engaging  
interactive corporate creativity workshops and training  
programs use arts based experiential learning to  
boost individual and team performance in pursuit of  
innovation.



## Put creativity to work in your organization.

Contact: Twyla Exner, Director of Public Programs  
250-614-7804 | [twyla@tworiversgallery.ca](mailto:twyla@tworiversgallery.ca)





Build your imagination

2RG



## Open Make Drop-in

Thursdays, 5–9pm

**Everyone welcome!**

\$5 for drop in • Free Admission if you bring your own materials. Ages 13 and under must be accompanied by an adult. Ages 14–16 must have a signed parental permission form on file.

## Tools

LASER CUTTER • 3D PRINTER • PROFESSIONAL DRAFTING TABLE • **WOODWORK:** BANDSAW • ROUTER • CARVING TOOLS • SANDER • GRINDER • WOODTURNING LATHE • MITRE SAW • SCROLL SAW • DRILL PRESS • **METAL WORKING TOOLS:** SOLDERING KITS • **GENERAL:** DRILLS • SCREW DRIVERS • EXACTO KNIVES • HAND SAWS • **CRAFTS:** LEATHER MAKING • BUTTON MAKER • PAINTING SUPPLIES • FELTING • CASTING • SEWING MACHINES • KNITTING AND CROCHET



**Make  
TO  
Give** 2RG



First  
Thursday  
of every  
month!

*Make to Give* combines maker projects with the needs of the community by presenting a fun, hands on way to gather, make and create things that will directly benefit the community or organizations that work hard to support the betterment and wellbeing of Prince George.

## Repair Café

*Repair Café* provides an opportunity for community members to get together, learn together and make together, acting as a meeting place for community members to repair things in a social and supportive environment. MakerLab, as a host, will provide space, tools, materials, mentors and workshops to help people learn and make the repairs needed.



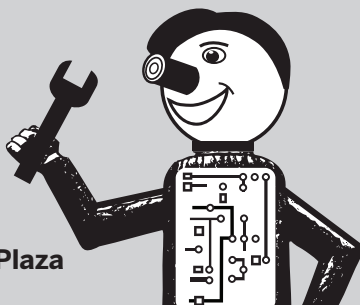
Prince George

# Mini Maker Faire®

SATURDAY  
SEP 30

10am to 3pm

in & around  
Canada Games Plaza



## Make, create, craft, build & play.

## FREE to attend and sure to inspire!

Volunteer oppportunities: [makerlab@tworiversgallery.ca](mailto:makerlab@tworiversgallery.ca)

[www.princegeorge.makerfaire.com](http://www.princegeorge.makerfaire.com)



# Call for Makers

**Space** (limited, book early!)

Free: non-sale Makers

\$75: commercial Makers



Contact: [makerlab@tworiversgallery.ca](mailto:makerlab@tworiversgallery.ca)

TECH ENTHUSIASTS, ARTISTS, CRAFTERS, HOMESTEADERS,  
SCIENTISTS, PERFORMERS, DO-IT-YOURSELFERS, DESIGNERS,  
INVENTORS-IN-THE-MAKING, MUSICIANS, 3D PRINTING,  
GARAGE TINKERERS, INNOVATORS, GROUP PROJECTS,  
WORKSHOPS, SOLDERING...



THE PRINCE GEORGE CITIZEN



The Prince George  
Public Library



CITY OF  
PRINCE GEORGE



Two Rivers  
Gallery

## CELEBRATE WITH US!



In celebration of Canada's 150<sup>th</sup> birthday we have decided to offer free admission to the museum for the month of July. This will kick off with our annual Canada day activities on July 1<sup>st</sup>.

Food and drinks will be available from 11:00 am until 2:00 pm or as long as they last! We will also have live music and the ceremonial cutting of the large Canada day cake by the Mayor and RCMP dressed in their red serge uniforms.

This year the annual Valemountain days celebrations will also be held over the Canada day long weekend and the parade will be starting and finishing at the museum.

We open for the season on May 16<sup>th</sup>.

We hope to see you some time this summer!!

The museum is located at 1090 Main St  
Valemount BC, V0E2Z0

For information please call 250-566-4177 or  
Email [administrator@valemountmuseum.ca](mailto:administrator@valemountmuseum.ca)



tripadvisor®

# mackenzie & district museum

“People’s minds are changed through observation  
and not through argument”.

- Will Rogers

**An excerpt from a letter by J. F. Bishop, Project  
Supervisor to Brian Cowan at BC Institute of  
Technology dated 04 April 1973:**

## *Comparison of Downing Methods:*

### *Production*

<i>Tree Crusher</i>	<i>2 – 4 acres/hour</i>
<i>D-9 Caterpillar</i>	<i>1 acre/hour</i>
<i>Hand Felling</i>	<i>1 acre/day</i>

## *LeTourneau 175 Tree Crusher*

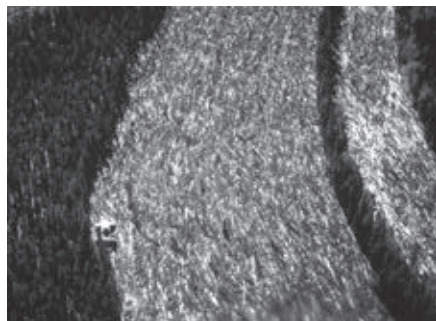
*Electrically powered, similar in principle to  
a steam roller. Main components are two  
8’ diameter x 30’ grouser covered rollers,  
connected by a main frame. Steering by  
angular rotation of front roller assembly.*

<i>Overall Length</i>	<i>56 ft.</i>
<i>Height</i>	<i>21 ft.</i>
<i>Width</i>	<i>35 ft.</i>
<i>Grousers</i>	<i>6” x 6” x 3”</i>
<i>Push Beam Height</i>	<i>15 ft.</i>
<i>Fuel Capacity</i>	<i>1,100 gallons</i>
<i>Weight</i>	<i>200 tons</i>

*Power: 2 – V12 700 hp. Cummins diesel  
engines driving A.C. and D.C. generators.*

*Power Application – 4 D.C. drive motors,  
one each end of each roller; 1 A.C. motor for  
steering.*

*D.C. motors rated at 200 – 250 hp.*



*When the tree crusher worked.*

© 2015.05.02.040



*I’m stuck and I need help. © 2010.15.66*



*When you weigh 200 tons and meet mud.*

© 2010.15.64

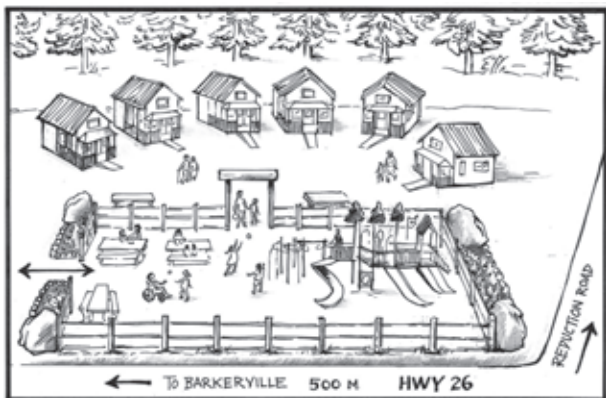
**Like us on Facebook!**  
**mackenziemuseum**



***Our hours are 10 am to 2 pm, Tuesday to Saturday, September to June. During July and August  
we are open 9am to 5pm, Tuesday to Saturday. Our phone number is 250-997-3021 and our  
email address is [museum@mackbc.com](mailto:museum@mackbc.com). Each artifact in the Museum has a story and we  
want to tell the world.***

### LOTTIE BOWRON COTTAGE INAUGURAL SEASON AUCTION

Barkerville Historic Town and Park is enlisting your support to help us complete the Barkerville Cottages Project. This project will address the accommodation shortages at Barkerville through the construction of six (6) cottages, each featuring three bedrooms, a kitchen, 1.5 bathrooms, a covered porch, a storage room, and a wheelchair accessible main floor. The first of our cottages, the Lottie Bowron Cottage, is scheduled to open winter 2017.



We invite you, our supporters and fans, to bid on the opportunity to stay in the Lottie Bowron cottage in its inaugural year. Through this auction, we're making the best accommodations on our busiest days of the year at Barkerville available to you. All you have to do is submit the highest bid! Happy bidding!

To learn more about the project and our advanced sponsorship opportunities, please contact us for further information at 1-888-994-3332, [barkerville@barkerville.ca](mailto:barkerville@barkerville.ca), or visit [www.32auctions.com/BarkervilleCottages](http://www.32auctions.com/BarkervilleCottages).

## BARKERVILLE HISTORIC TOWN & PARK

The Cariboo region of British Columbia's central interior has been profoundly shaped by gold, thanks in large part to a simple, working-class English prospector named Billy Barker. In August 1862, Barker helped spearhead a twenty-year, multi-billion dollar industrial revolution that literally helped to build a Province.

The extraordinary historic town of Barkerville, named in Billy's honour, now stands as a living testament to these golden beginnings. Declared a National Historic Site of Canada in 1924, and later a Provincial Heritage Site in 1958, Barkerville is now the largest living-history museum in western North America.

B A R K E R V I L L E   H I S T O R I C   T O W N

Box 19 | Barkerville, BC | V0K 1B0

250-994-3302 ext. 38 | 888-994-3332 toll free | 250-994-3435 fax

[www.barkerville.ca](http://www.barkerville.ca)  
[barkervilleblog.com](http://barkervilleblog.com)

[barkerville.wordpress.com](http://barkerville.wordpress.com)  
[facebook.com/barkervillebc](https://facebook.com/barkervillebc)





# FORT ST JAMES NATIONAL HISTORIC SITE

**Free admission  
every day in 2017**  
at Fort St. James  
National Historic Site.

## Fort St. James National Historic Site Online:

Keep up to date with events and photos all year long by finding us online!

You can find us on Facebook, Twitter, and Instagram!

[www.facebook.com/pages/Fort-St-James-National-Historic-Site](https://www.facebook.com/pages/Fort-St-James-National-Historic-Site)

<https://twitter.com/ffsjnhs>



**Fort St. James  
National Historic Site**  
[parkscanada.gc.ca](http://parkscanada.gc.ca)



**Fort St. James  
National Historic Site**  
[parkscanada.gc.ca](http://parkscanada.gc.ca)

**Lieu historique national  
du Fort-St. James**  
[parkscanada.gc.ca](http://parkscanada.gc.ca)

## Artifact of the Week: 1931 Canadian Readers

School was an important fact of life for families in the frontier. In Dunster, a school was established within a year of the Train Station's completion. Community members, particularly men, and perhaps most surprisingly, unmarried men, first met and determined that a school was an essential need within their new community. In less than a year, these industrious men had built a school, and posted to hire a teacher. Much of the expense to build a school was incurred by locals who believed in the project. After all, without a school, it would be harder to attract young families with children.

Supplies in the schools were scarce in the first few years, which would have required considerable imagination and skill on the part of those early teachers. The arrival of early teachers was considered a major event in our small towns, particularly for the single men, who would all line up as a new, young teacher would get off the train. Teachers were almost exclusively young women at this point and stayed for only a few years. During that time though, they seldom lacked dance partners or invitations to dinner. Without decent roads or bridges, the commute to school for young children was an ordeal. Not quite the ordeal that some of our grandparents would have us

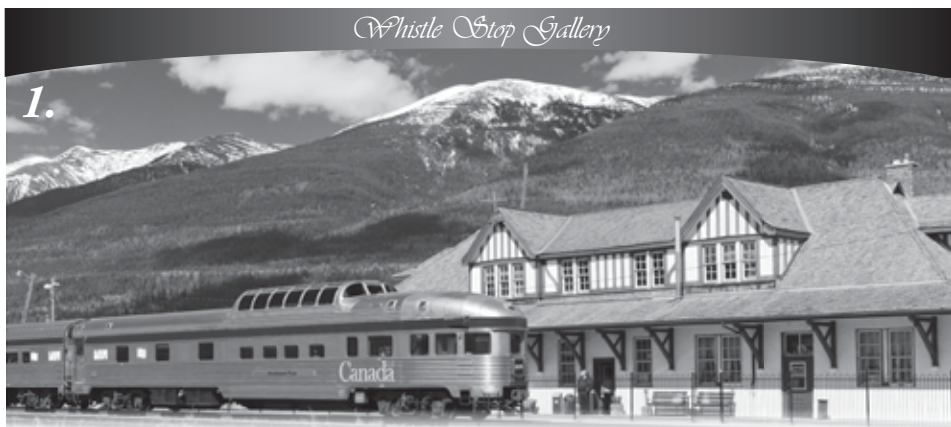


*Hazel Nicholl & Don McNaughton 1924 at the Lee School. Both were young to be in school (Don born Sept. 15, 1920) but were 'recruited' in order to have enough students to keep the school open. Some adults teased Don, saying tyhat his lunch pail was bigger than he was.*

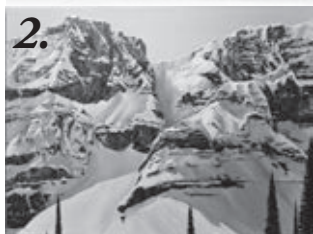
believe, but certainly more than the students of today experience. Some children, including Beatrice Blackwood, would ride their horse to school. While some of the horses would spend the day at the school so that its owner would have a ride home, Beatrice would slap her horse on the rump and it would trot home on its own.

Several schools existed within the Robson Valley, including ones at South Croydon, North Croydon, Lee Road, Dunster, McBride, Cresecent Spur, Dome Creek, Lamming Mills and Beaver River. Even in the earlier years, the number of students would fluctuate and face threats of closure. At one point the Lee Road School was hurting for numbers, so very young children were recruited. Don McNaughton and Hazel Nicholl were recruited to attend the Lee School in 1924. Don, who was born in September of 1920,

was often teased by adults that his lunch pail was bigger than he was. By the time Don had reached the older grades, he was able to use newly ordered primers. On loan from Ken and Kim McNuaghton, Don's Canadian Readers (levels 3,4,5) will be on display at the Dunster Station Museum this summer as we celebrate the pioneering spirit of the McNaughton family. They are an interesting comparison to the changes in expectations of students through time.



1.



2.



3.



4.



5.

## Inside the Whistle Stop Gallery

1. In the spectacular Rocky Mountains, the local passenger train makes at stop at McBride's Heritage Railway Station, home of the Whistle Stop Gallery.
2. "Snow and Ice Redux", acrylic painting by Glen Frear
3. "My Interpretation of Horse Shoe Lake", stained glass with metal overlay by Rhea Chartier
4. Hand painted pendant and bookmark, made from shed antler by Jan Norton
5. "McBride Poppy", large acrylic-mounted photo by William (Bill) Ingles
6. Traditional hand carved wood by Andreas
7. "Spirits of Ancient Woods", cottonwood tree bark carvings by O'Darda (CM Kirchsclaeger)
8. Inspired by the Robson Valley: works in many media by creative people from Dome Creek to Tete Jaune and Valemount are showcased in the gallery. Open seven days a week 9 am to 5 pm.



7.



6.



8.

#### **Barkerville Historic Town**

Barkerville, B.C.  
Phone: 1-888-994-3332  
[www.barkerville.ca](http://www.barkerville.ca)

#### **Fort St. James National Historic Site**

Fort St. James, B.C.  
Phone: 250-996-7191  
[www.pc.gc.ca/stjames](http://www.pc.gc.ca/stjames)

#### **Huble Homestead Historic Site**

Prince George, B.C.  
Phone: 250-564-7033  
[www.hublehomestead.ca](http://www.hublehomestead.ca)

#### **Mackenzie & District Museum**

Mackenzie, B.C.  
Phone: 250-997-3021  
[www.mackenziumuseum.ca](http://www.mackenziumuseum.ca)

#### **Railway & Forestry Museum**

Prince George, B.C.  
Phone: 250-563-7351  
[www.pgrfin.bc.ca](http://www.pgrfin.bc.ca)

#### **The Exploration Place Science Centre & Museum**

Prince George, B.C.  
Phone: 250-562-1612  
or 1-866-562-1612  
[www.theexplorationplace.com](http://www.theexplorationplace.com)

#### **Two Rivers Gallery**

Prince George, B.C.  
Phone: 250-614-7800  
or 1-888-221-1155  
[www.tworiversgallery.com](http://www.tworiversgallery.com)

#### **Valemount Museum**

Valemount, B.C.  
Phone: 250-566-4177  
[www.valemountmuseum.ca](http://www.valemountmuseum.ca)

#### **Valley Museum & Archives**

McBride, B.C.  
Phone: 250-569-3000  
[www.valleymuseumarchives.ca](http://www.valleymuseumarchives.ca)

#### **Whistle Stop Gallery**

McBride, B.C.  
Phone: 250-569-8891  
[www.whistlestopgallery.org](http://www.whistlestopgallery.org)




**A GOLDEN RAVEN  
EXPERIENCE**

ARTS | CULTURE | HERITAGE

[www.goldenraven.ca](http://www.goldenraven.ca)

**EXPERIENCE THE HISTORY, EXPERIENCE THE ARTS,  
EXPERIENCE GOLDEN RAVEN  
CULTURAL ATTRACTIONS.**

The Exploration Place  
PO Box 1779  
Prince George, BC V2L 4V7

CANADA		POSTES
POST		CANADA
Postage paid		Port payé
Addressed Admail		Médiaposte avec adresse
40954503		